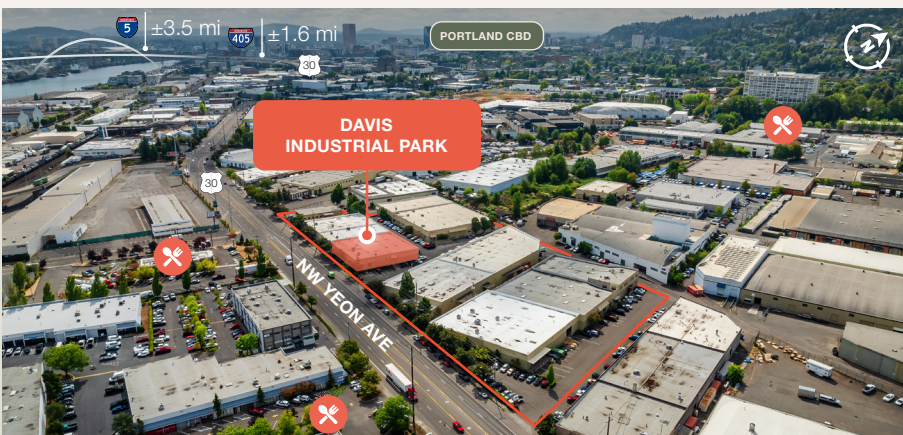


INDUSTRIAL/WAREHOUSE
FOR LEASE

Davis Industrial Park

3217 NW Yeon Ave, Portland, OR 97210
Building A



Key Features



14,400 sq. ft. shell



3,268 sq. ft. office



1 dock door
1 grade door

13' clear height

LED lighting

Convenient access to I-405
and I-5

Desirable Guilds Lake
location

Lease Rate (NNN):
\$0.85/sq. ft. shell
\$1.00/sq. ft. office

Jake Bigby
jakeb@pactrust.com

Caitlin Knecht
caitlink@pactrust.com

503.624.6300

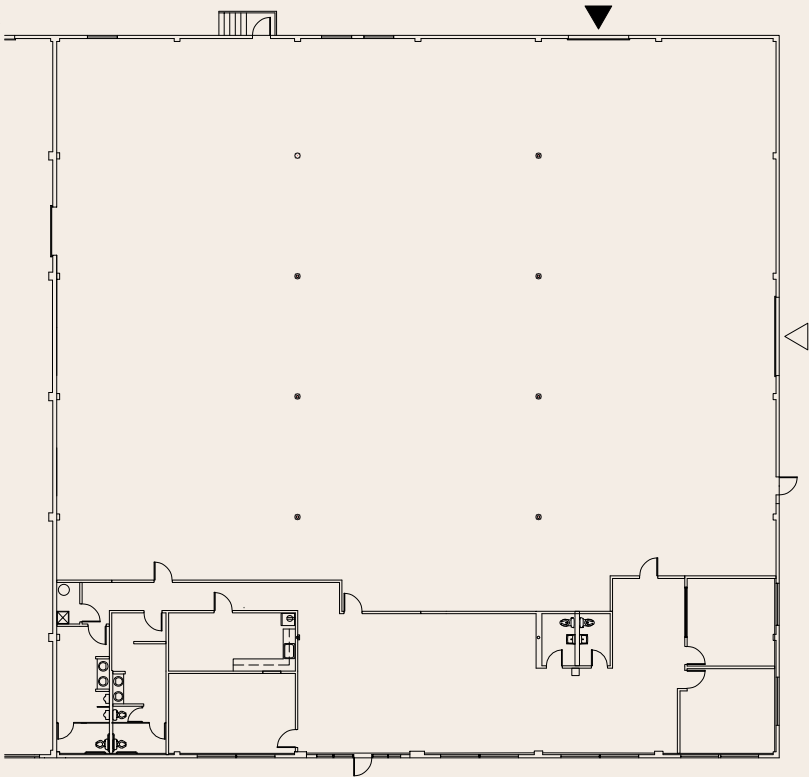
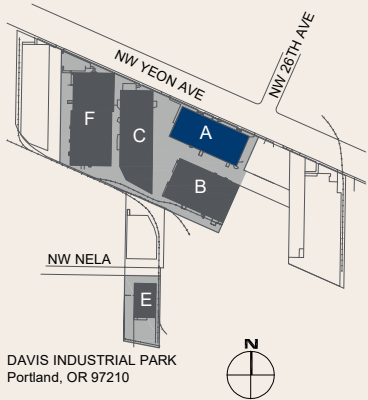
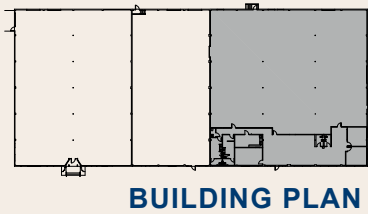
Owned & Managed by

PACTRUST

Space Plan

3217 NW Yeon Ave, Portland, OR 97210

14,400 Sq. Ft.



PROPOSED PLAN

Jake Bigby
jakeb@pactrust.com

Caitlin Knecht
caitlink@pactrust.com

503.624.6300
www.PacTrust.com